

Motor 8 - LEAKEY LL

E3-A. Drg 8 9/85

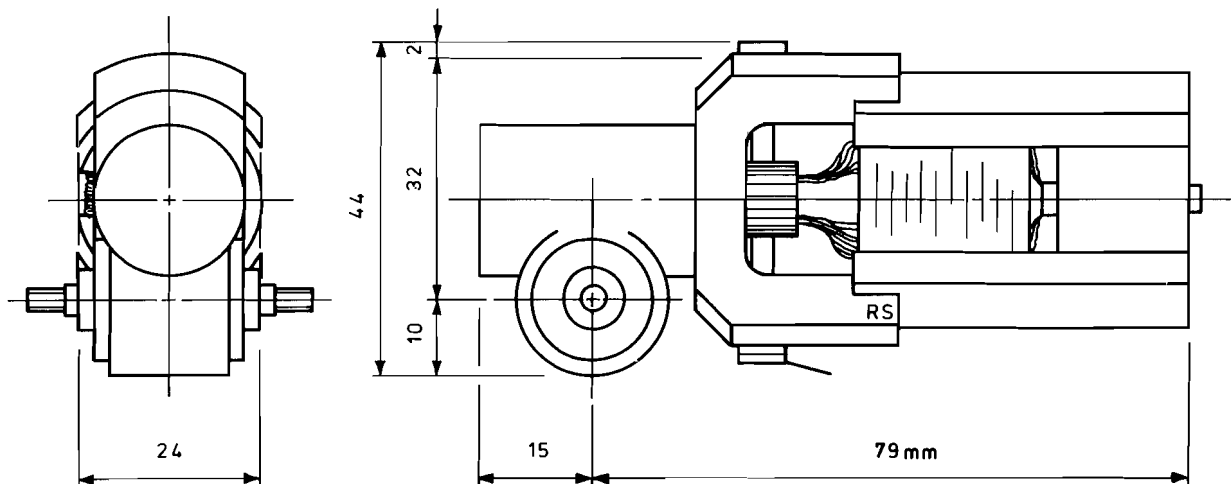
DC permanent magnet motor/gearbox unit manufactured by DM Leakey.

3-pole armature, replaceable Carbon brushes. Motor and gearbox shafts carried in enclosed ball races. Nominal voltage - 12 volts. No load speed (motor) - 3700 rpm. Stalled current - 2.4 amps. Stalled torque - 750 gram cm. Gearbox ratio - 12:1. Efficiency - 50% (Worm end thrust taken by ball races). Driving axle speed - 308 rpm.

Comment : This unit has a very high tractive effort but is limited in its top speed. Suitable for the most powerful freight and mixed traffic locomotives.

Data source: Guild bench test.

Available from DM Leakey, 7 Camplin Street, New Cross, London SE14 8JX.



SEE REVERSE FOR GRAPH

